



# INDOFINE Chemical Company, Inc.

121 Stryker Lane, Bldg. 30, Suite 1 • Hillsborough, NJ 08844 • U.S.A.

Phone: (908) 359-6778 • FAX: (908) 359-1179

website: [www.indofinechemical.com](http://www.indofinechemical.com)

e-mail: [chemical@indofinechemical.com](mailto:chemical@indofinechemical.com)

## CERTIFICATE OF ANALYSIS

Catalog Number: 22-338

Product Name: **2,2',5'-TRIHIDROXYCHALCONE**

Lot Number: 1611928

Molecular Formula: C<sub>15</sub>H<sub>12</sub>O<sub>4</sub>

Molecular Weight: 256.26

Melting Point: 174-176°C

Appearance: Brick red powder

Moisture(KF): 0.24%

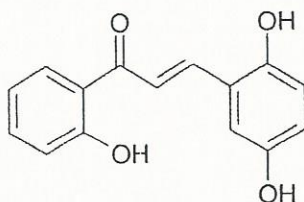
Solubility: Soluble in DMSO

TLC: Hexane:Ethyl acetate (1:1)

NMR Spectrum: Enclosed (Conforms to the structure)

Storage: Store in a cool, dry place. Protected from light.

Purity(HPLC): 98.20%





# INDOFINE Chemical Company, Inc.

121 Stryker Lane, Bldg. 30, Suite 1 • Hillsborough, NJ 08844 • U.S.A.

Phone: (908) 359-6778 • FAX: (908) 359-1179

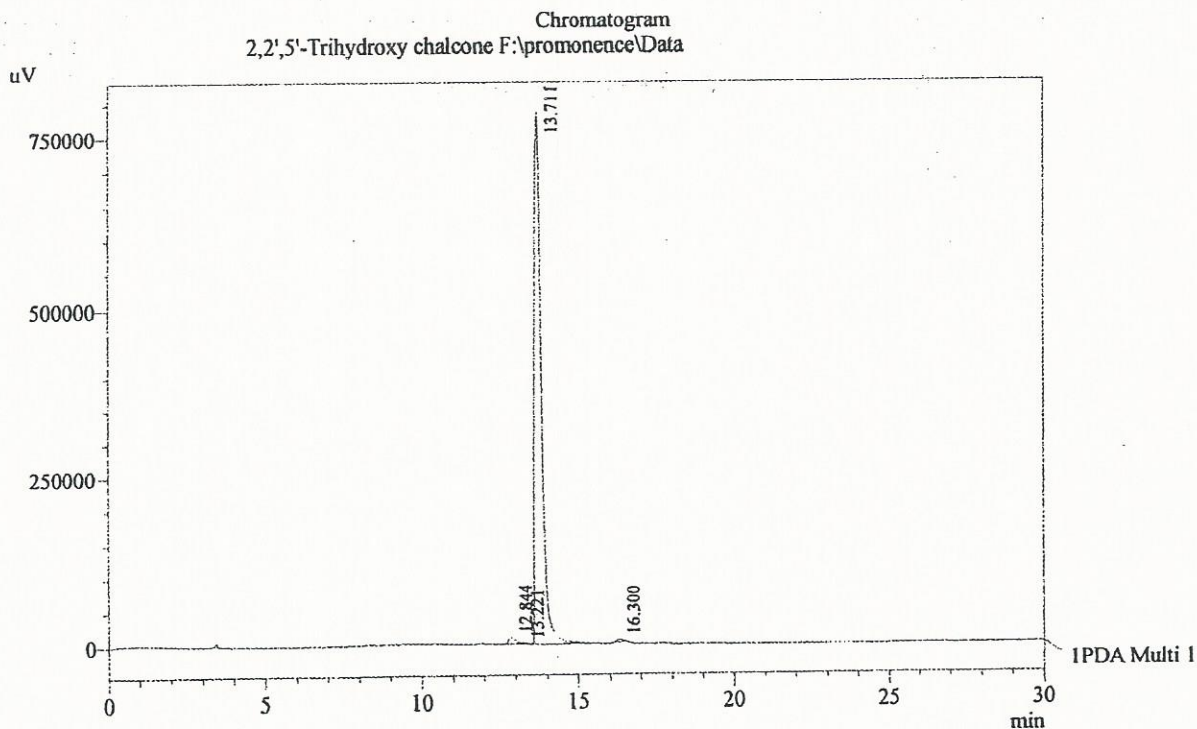
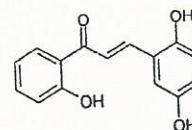
website: [www.indofinechemical.com](http://www.indofinechemical.com)

e-mail: [chemical@indofinechemical.com](mailto:chemical@indofinechemical.com)

## HPLC ANALYSIS

Acquired by : Admin  
 Sample Name : 2,2',5'-Trihydroxy chalcone  
 :  
 :  
 Injection Volume : 1 uL  
 Data Filename : 111116A.lcd  
 Method Filename : Linear Gradient.M.lcm  
 Report Filename : Default.lcr

Catalog No.: 22-338  
 Product Name: 2,2',5'-Trihydroxychalcone  
 Lot No.: 1611928



1 PDA Multi 1 / 254nm 4nm

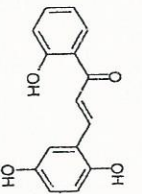
PeakTable

PDA Ch1 254nm 4nm

Peak#	Name	Ret. Time	Area	Area %	Relative Retention Time
1	RT:12.844	12.844	144018	1.18	0.00
2	RT:13.221	13.221	21080	0.17	0.00
3	RT:13.711	13.711	11946609	98.20	0.00
4	RT:16.300	16.300	53577	0.44	0.00
Total			12165284	100.00	



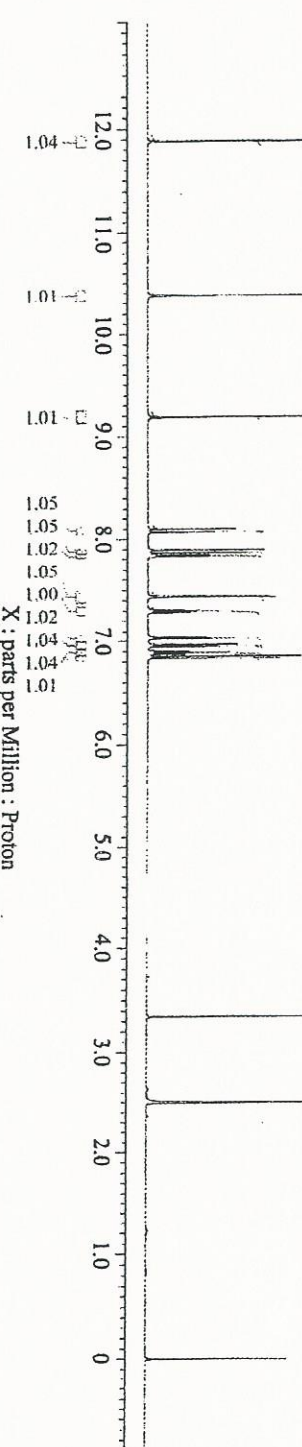
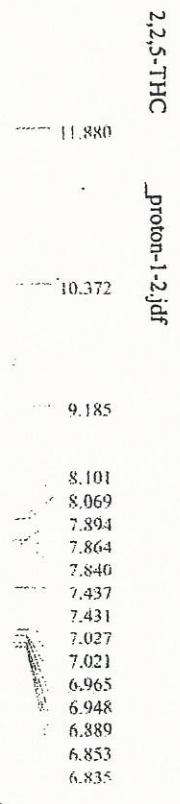
**INDOFINE Chemical Company, Inc**  
 121 STRYKER LANE  
 BLDG. 30, SUITE 1  
 HILLSBOROUGH, NJ 08844



Catalog No.: 22-338  
 Product Name: 2,2',5'-Trihydroxychalcone  
 Lot No.: 1611928



Solutions for Innovation



X : parts per Million : Proton

```

---- PROCESSING PARAMETERS ----
sweep ( 0.21Hz, 0.01s )
t1rho ( 0.01s, 0.01s, 0.01s, 80.00%, 100.00% )
zangr ( 1.0, 1.0 )
f2 ( 1.0, TRUE, TRUE )
machinephase
ppm
reference ( -0.05149 [ppm], 0 [ppm] )
reference ( -0.0 [ppm], 0 [ppm] )
reference ( 0.00688 [ppm], 0 [ppm] )
reference ( -0.0 [ppm], 0 [ppm] )

```

```

Derived from: 2,2,5-THC proton-1-1.jdf
Filename      = 2,2,5-THC proton-1-2
Instrument id  = NMR-02
Author        = gxy1243
Reviewed by   = GSK
Solvent       = DMSO-D6
Spectrometer  = JNM-ECZ500R/SI
Experiment    = proton.jxp

```

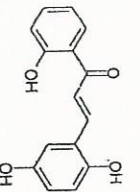
```

Acquisition Parameters
X_Domain      = 1H
X_Offset      = 7.0 [ppm]
X_Sweep       = 11.28158845 [kHz]
Scans         = 16
Relaxation_Delay = 2 [s]

```



**INDOFINE Chemical Company, Inc.**  
 121 STRYKER LANE  
 BLDG. 30, SUITE 1  
 HILLSBOROUGH, NJ 08844



Catalog No.: 22-338  
 Product Name: 2,2',5'-Trihydroxychalcone  
 Lot No.: 1611928

2,2,5'-THC

\_proton-1-2.jdf

8.101
8.069
7.894
7.864
7.843
7.840
7.827
7.824
7.437
7.431
7.314
7.312
7.298
7.284
7.281
7.045
7.038
7.027
7.021
7.012
6.965
6.948
6.904
6.889
6.875
6.853
6.835

J-Coupling Analysis Report

File : 2,2,5-THC

\_proton-1-2.jdf

Position	Int	Pat	J
11.88 [ppm]	1	s	
10.37 [ppm]	1	s	
9.18 [ppm]	1	s	
8.08 [ppm]	1	d	J1 = 15.8 [Hz]
7.88 [ppm]	1	d	J1 = 15.1 [Hz]
7.83 [ppm]	1	dd	J1 = 8.3 [Hz]
7.43 [ppm]	1	d	J1 = 1.4 [Hz]
7.30 [ppm]	1	m	
7.03 [ppm]	1	m	
6.96 [ppm]	1	d	J1 = 8.3 [Hz]
6.89 [ppm]	1	t	J1 = 7.2 [Hz]
6.84 [ppm]	1	d	J1 = 9.0 [Hz]

